

Vibration Massage Comb



READ THESE INSTRUCTIONS COMPLETELY.
SAVE THESE INSTRUCTIONS FOR FUTURE REFERENCE.

Product Description

- 1.It has simple and fashion appearance,You can hold it in one hand which is easy to operate.
- 2.Well arranged ergonomic comb teeth and rolling ball liquid outlet teeth fit the scalp well to make you feel comfortable during use.
- 3.It will automatically shut down after 15 minutes. With a user-friendly remind function include LED indicator and sound prompt.
- 4.Infrared electronic wave could help energize cells of scalp,promote metabolism, and accelerate hair growth. It is suitable for daily maintenance of people who have hair problems.
- 5.It has strong lead-in function by EMS and -ION, make hair care products easier to be absorbed by scalp.
- 6.The vibration massage function could help you to refresh brain and dredging meridian, which is more suitable for sub-healthy people.



Methods and Steps of Product Application

- 1.Rotate the hook to the right (counterclockwise) until it is removed, slowly adding liquid (as shown in FIG. 1)
- 2.The maximum capacity of the tank is 10ml, please tighten the hook before using it. please tighten the hook and close the USB recharge port before using it. Supplement liquid if need.
- 3.Press the switch key for 3 seconds to turn it on (shown in FIG 2). The -ION lead-in function, the 1-speed vibration function and 3pcs infrared lights together with 3pcs red LED lights are automatically turned on . (The green indicator lights up).
- 4.According to your own condition, press the vibration button(shown in FIG.2) to adjust the vibration frequency (3 gears, blue indicator). Press the EMS function button to adjust the current according to your needs(It has 3 gears). When this function is turned on, the white indicator lights up(Gear 1 flash once, gear 2 flash twice and gear 3 flash three times).

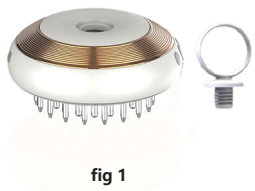


fig 2

- 5.Place the comb on the front of the head and comb from ahead to the back or from the top to down. Repeat this action. Adjust its working period according to your actual needs. (As shown in FIG.3)

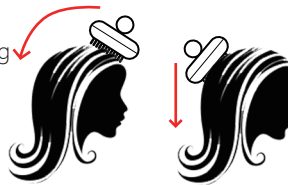


fig 3

- 6.After finished, rinse the lotion on the tooth surface with clean water, wipe it with a soft cloth or tissue paper, and place it on a transparent tray.

Precautions

- 1.The product has a micro USB universal charging interface. Ple charging cable to charge.
- 2.When the product is charging, the red indicator flashes. When the red charging indicator is always on. When the product short light flashes with beep sound and then shut down. Please charge
- 3.After using, if the tank still have hair care products, pleas to prevent the liquid from solidifying and clogging the liquid
- 4.Dismantle the product is prohibited.
- 5.Do not let children touch this product.

Product Parameters and Specifications

Product s Name	Vibration Massage Comb	Product Model	
Charging Voltage	DC 5V/1A	Battery Capacity	600mAh
Vibration Frequency	7500rpm	Service Power	≤0.75(W)
Charging Time	≤3.5(H)	Tank capacity	10ml
Product' s Size	φ 85*43.8 (mm)	Product Weight	141.6g

Tips

- 1.This product is warranted for one year.
- 2.Use according to the precautions in the manual, and free main during the warranty period.(Please submit product warranty card
- 3.If you have any of the following conditions, you must pay for **period:**
 - (1) Failure and damage due to incorrect use.
 - (2) Failure and damage caused by improper disassemble to rep
 - (3) Failure and damage by using the improper power supply(vol irresistible factors such as fire, earthquake, electric shock,
- 4.It is forbidden to use liquid with high acidity and alkalinit
5. After the charging is completed, please close the recharge pliquid volatilize and enter into the recharge port then cause corosion.

Warranty Card

Warranty Card of Products			
Product Model		Product Color	
Purchase Address			
Customer's Name		Purchase Date	
Customer's Phone No			
Customer's Address			

CE FC ROHS